

ZW10 Antibody (monoclonal) (M05)**Mouse monoclonal antibody raised against a partial recombinant ZW10.****Catalog # AT4649a****Specification**

ZW10 Antibody (monoclonal) (M05) - Product Information

Application	WB, E
Primary Accession	O43264
Other Accession	NM_004724
Reactivity	Human
Host	mouse
Clonality	Monoclonal
Isotype	IgG2a Kappa
Calculated MW	88829

ZW10 Antibody (monoclonal) (M05) - Additional Information**Gene ID** 9183**Other Names**

Centromere/kinetochore protein zw10 homolog, ZW10

Target/Specificity

ZW10 (NP_004715, 1 a.a. ~ 100 a.a) partial recombinant protein with GST tag. MW of the GST tag alone is 26 KDa.

Dilution

WB~~1:500~1000

E~~N/A

Format

Clear, colorless solution in phosphate buffered saline, pH 7.2 .

Storage

Store at -20°C or lower. Aliquot to avoid repeated freezing and thawing.

Precautions

ZW10 Antibody (monoclonal) (M05) is for research use only and not for use in diagnostic or therapeutic procedures.

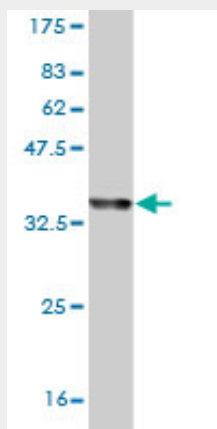
ZW10 Antibody (monoclonal) (M05) - Protocols

Provided below are standard protocols that you may find useful for product applications.

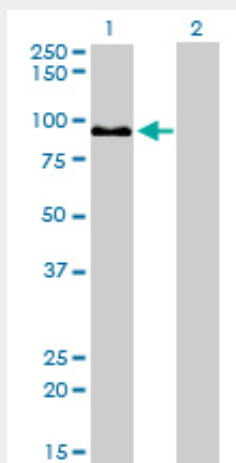
- [Western Blot](#)
- [Blocking Peptides](#)
- [Dot Blot](#)

- [Immunohistochemistry](#)
- [Immunofluorescence](#)
- [Immunoprecipitation](#)
- [Flow Cytometry](#)
- [Cell Culture](#)

ZW10 Antibody (monoclonal) (M05) - Images



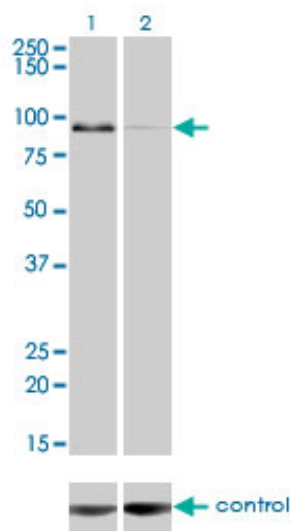
Antibody Reactive Against Recombinant Protein. Western Blot detection against Immunogen (36.63 kDa) .



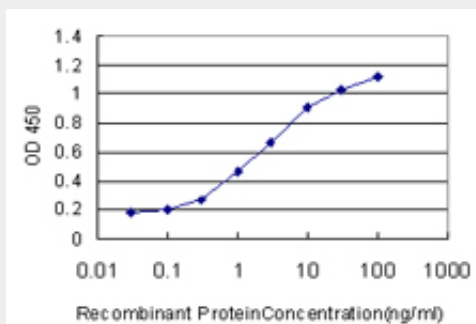
Western Blot analysis of ZW10 expression in transfected 293T cell line by ZW10 monoclonal antibody (M05), clone 2E5.

Lane 1: ZW10 transfected lysate (88.8 kDa).

Lane 2: Non-transfected lysate.



Western blot analysis of ZW10 over-expressed 293 cell line, cotransfected with ZW10 Validated Chimera RNAi (Cat # AT4649a)



Detection limit for recombinant GST tagged ZW10 is approximately 0.1ng/ml as a capture antibody.

ZW10 Antibody (monoclonal) (M05) - Background

This gene encodes a protein that is one of many involved in mechanisms to ensure proper chromosome segregation during cell division. The encoded protein binds to centromeres during the prophase, metaphase, and early anaphase cell division stages and to kinetochore microtubules during metaphase.

ZW10 Antibody (monoclonal) (M05) - References

Mitotic control of kinetochore-associated dynein and spindle orientation by human Spindly. Chan YW, et al. J Cell Biol, 2009 Jun 1. PMID 19468067. Identification of the neuroblastoma-amplified gene product as a component of the syntaxin 18 complex implicated in Golgi-to-endoplasmic reticulum retrograde transport. Aoki T, et al. Mol Biol Cell, 2009 Jun. PMID 19369418. N-terminal region of ZW10 serves not only as a determinant for localization but also as a link with dynein function. Inoue M, et al. Genes Cells, 2008 Aug. PMID 18782227. Stable hZW10 kinetochore residency, mediated by hZwint-1 interaction, is essential for the mitotic checkpoint. Famulski JK, et al. J Cell Biol, 2008 Feb 11. PMID 18268100. Aurora B kinase-dependent recruitment of hZW10 and hROD to tensionless kinetochores. Famulski JK, et al. Curr Biol, 2007 Dec 18. PMID 18065224.